

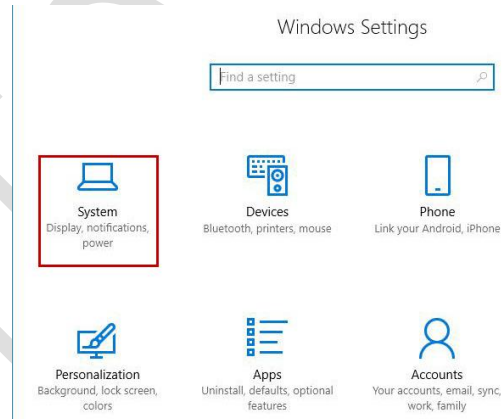
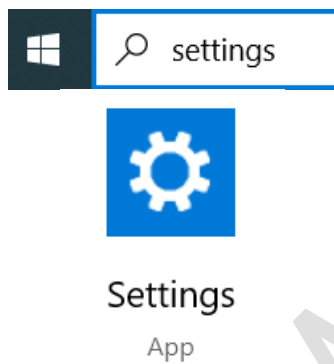


# VPN on Windows 10

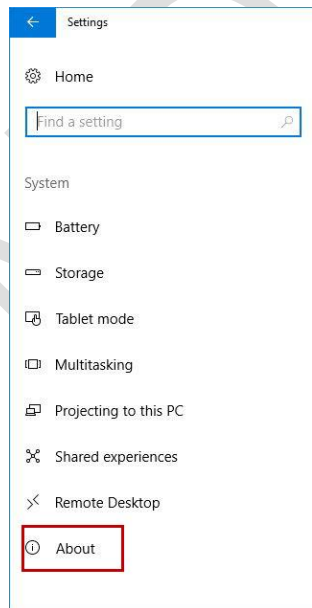
To apply VPN via Windows operating system, **Agent** must be installed first. To set up **Agent**, follow these steps:

## Step 1. How to Check Windows 64-bit or 32-bit

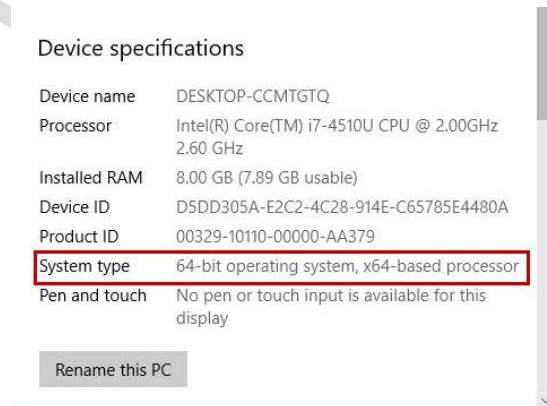
Select the **Start**  button, then select **Settings** Windows Setting คลิก System



System Setting click **About**



Under Device specifications > **System type**



## Step 2. Program Download

Start your browsers, such as Internet Explorer, Mozilla FireFox, or Google Chrome in order to download Agent from the URL: <https://vpn.nida.ac.th>



 **NIDA** สถาบันบัณฑิตพัฒนบริหารศาสตร์  
NATIONAL INSTITUTE OF DEVELOPMENT ADMINISTRATION

### GlobalProtect VPN

Name

Password

Login

After your successful login, go into the Download Global Protect Agent screen. Click Download according to your operating systems, e.g. 32-bit and 64-bit versions of Windows or Mac OS. Click Download. After the download is successfully completed, you will gain the file named GlobalProtect.



 **NIDA** สถาบันบัณฑิตพัฒนบริหารศาสตร์  
NATIONAL INSTITUTE OF DEVELOPMENT ADMINISTRATION

### GlobalProtect VPN

[Download Windows 32 bit GlobalProtect agent](#)

[Download Windows 64 bit GlobalProtect agent](#)

[Download Mac 32/64 bit GlobalProtect agent](#)

Windows 32 bit OS needs to download and install Windows 32 bit GlobalProtect agent.

Windows 64 bit OS needs to download and install Windows 64 bit GlobalProtect agent.

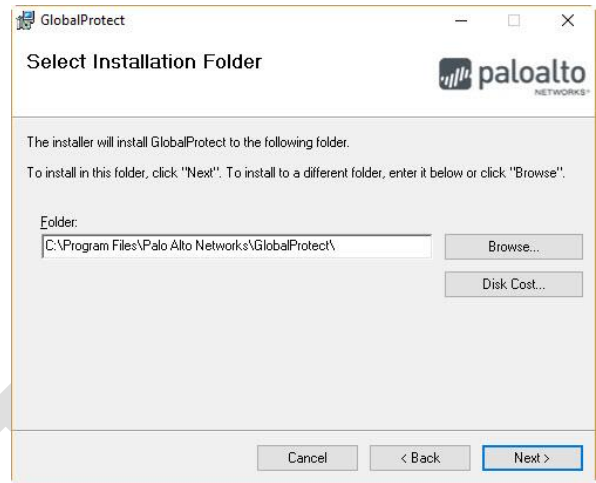
Mac OS needs to download and install Mac 32/64 bit GlobalProtect agent.

### Step 3. Program Set-up

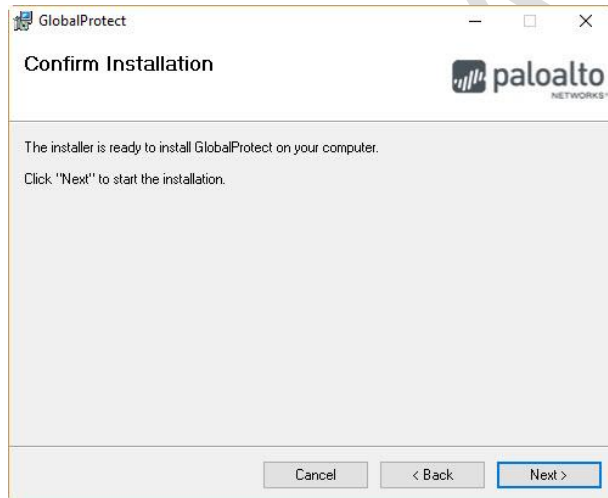
Welcome to the GlobalProtect Setup Wizard page. To proceed with the Setup Wizard, click the **Next** button.



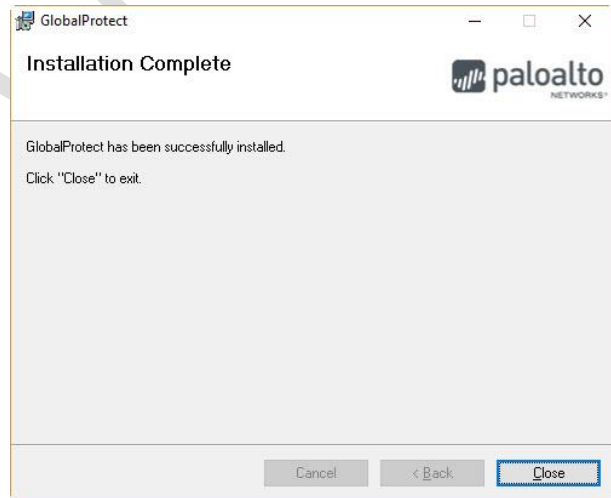
Select Installation Folder, click the **Next** button.





Confirm Installation , click the **Next** button.  
(wait install progress)



Installation Complete, click the **Close** button.



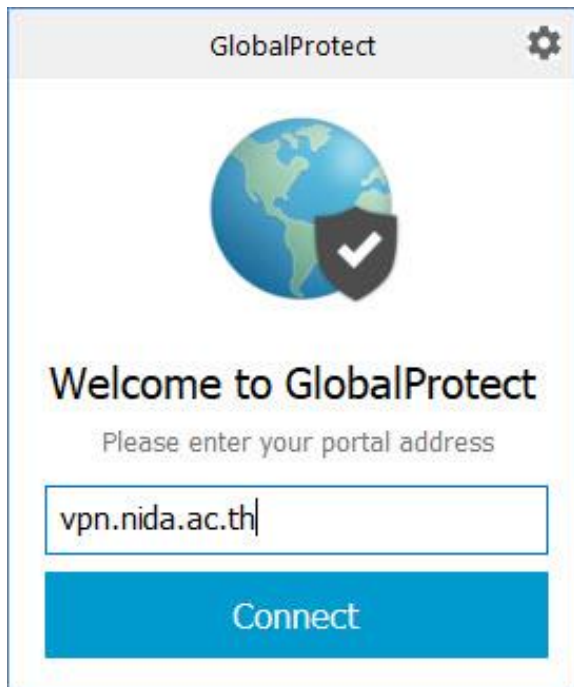
## Step 4. Settings before Operation

On Taskbar Click Globalprotect icon  in system tray  
the **Start**  button, then select globalprotect

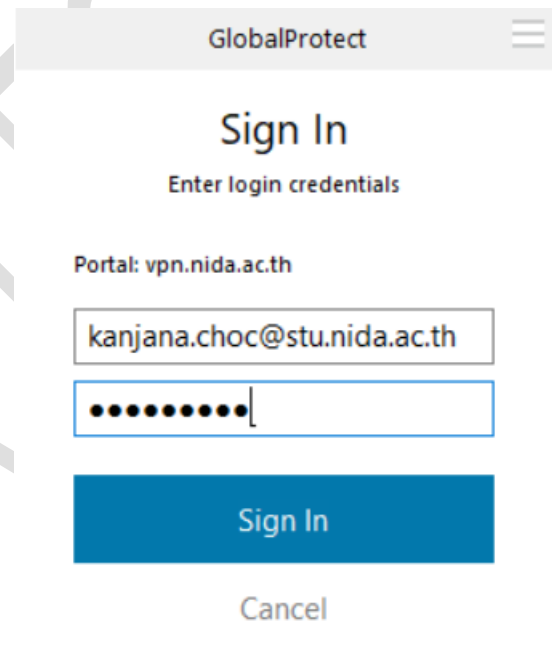


or Select

Portal address : enter [vpn.nida.ac.th](https://vpn.nida.ac.th) then  
Click the **Connect** button

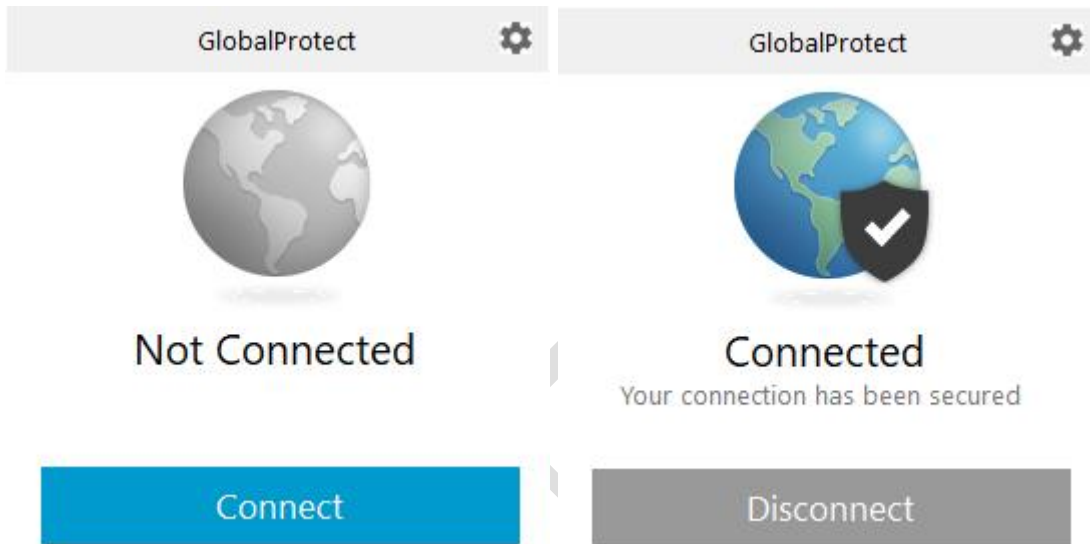


Username และ Password : enter your NetID  
[kanjana.choc@stu.nida.ac.th](mailto:kanjana.choc@stu.nida.ac.th) (Student)  
[onjira.rue@nida.ac.th](mailto:onjira.rue@nida.ac.th) (Faculty or Officer)



## Step 5. Connection and Disconnection

To connect the system, point to the icon in the taskbar tray in the bottom right-hand corner of the screen. Right-click and choose Connect. To disconnect from the system, point to the Windows tray as Right-click and choose Disconnect.



NDA