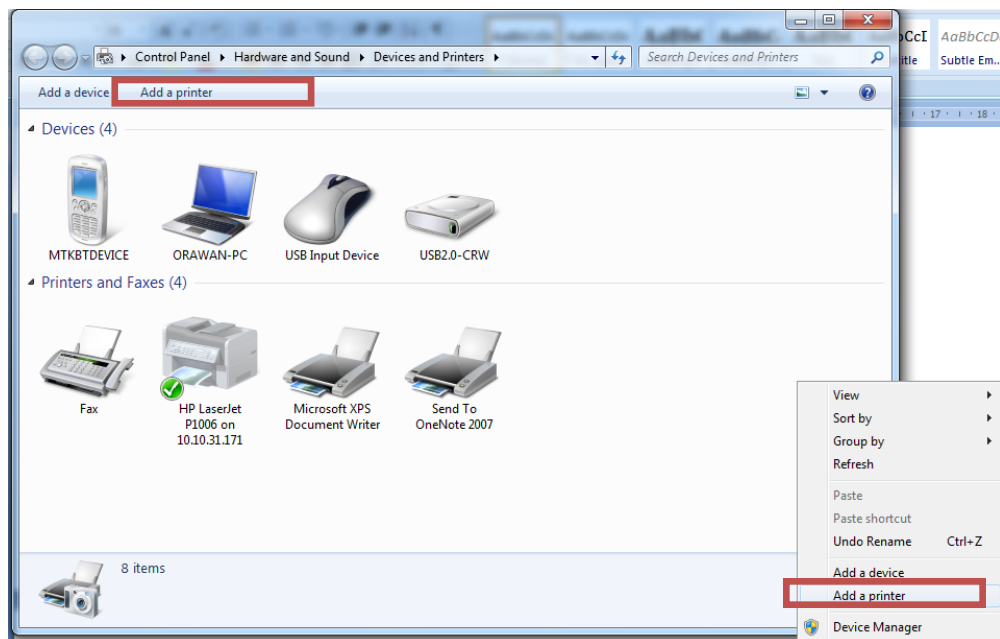


### 3. Add Printer

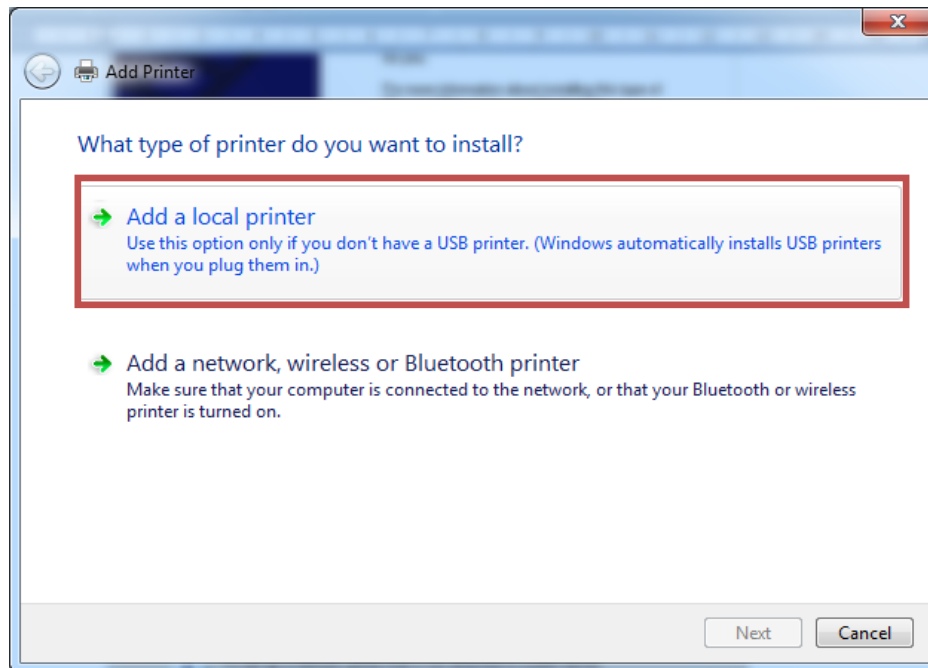
After Install Software Client and Safecom Application Print , You must add new Printer.

#### For Windows 7

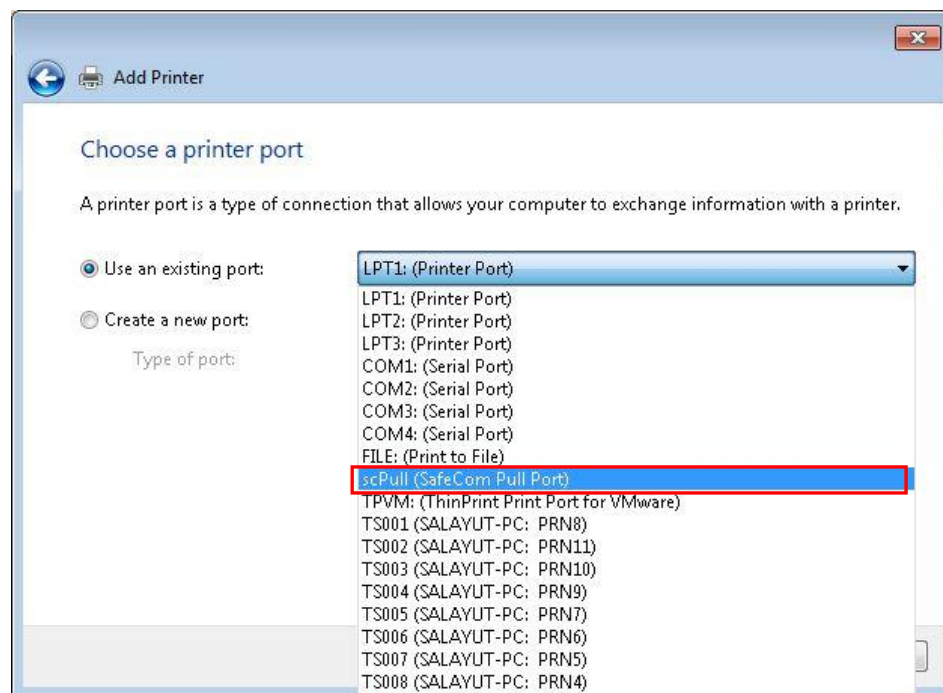
1. Go to : Start > Control Panel > Devices and Printers
2. Select “Add a printer”



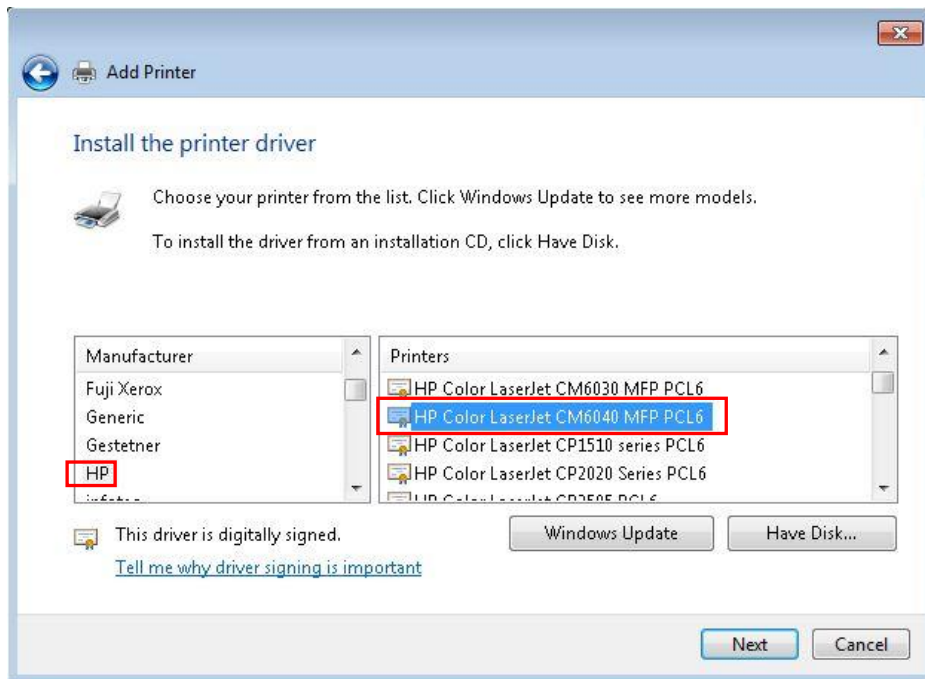
3. Select “Add a local printer”



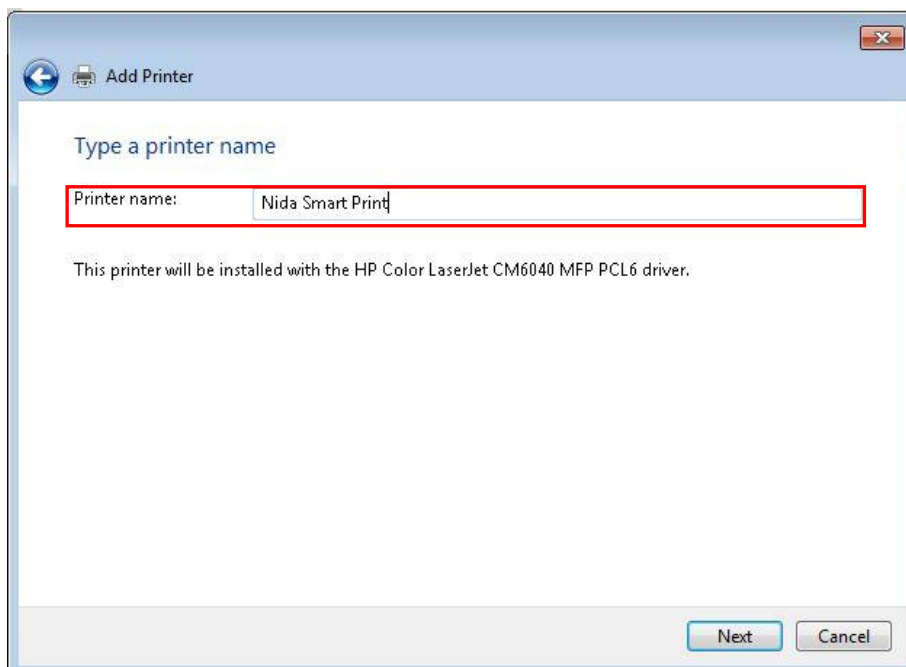
4. Select “scPull(SafeCom Pull Port)”, Then click Next.



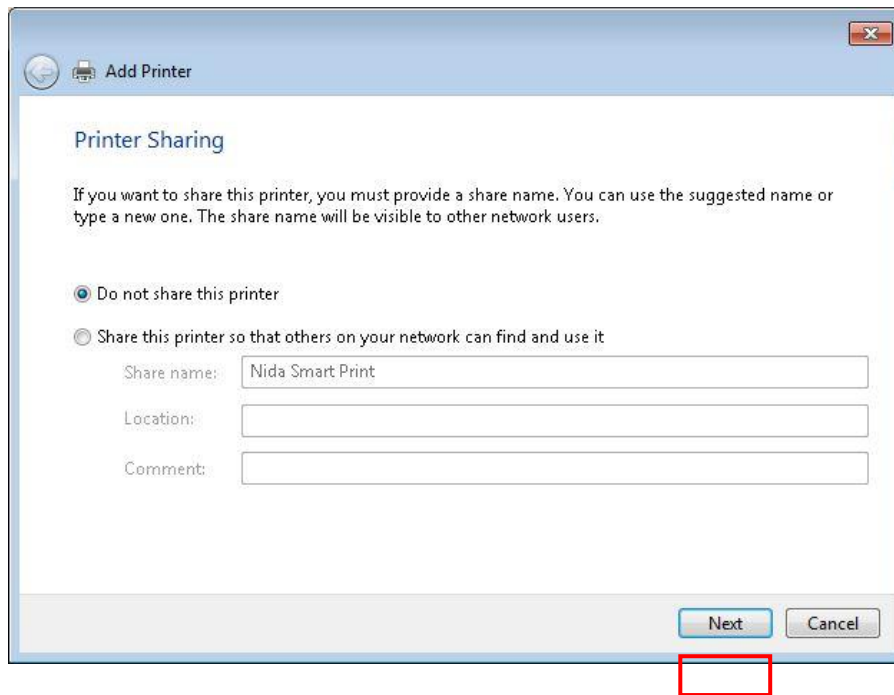
5. Select Manufacturer is “HP” and Select Printers is “HP Color LaserJet CM6040 MFP PCL6” , Then click Next .



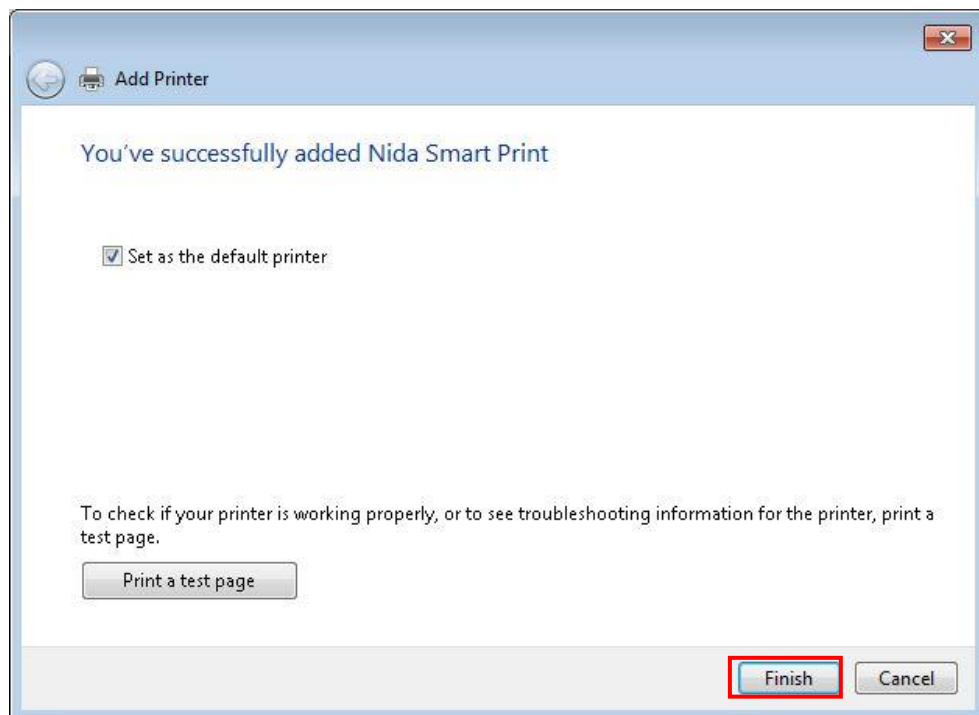
6. Enter the Printer name is “Nida Smart Print” , Then click Next to continue.



7. Select “Do not share this printer”, Then click Next to continue.

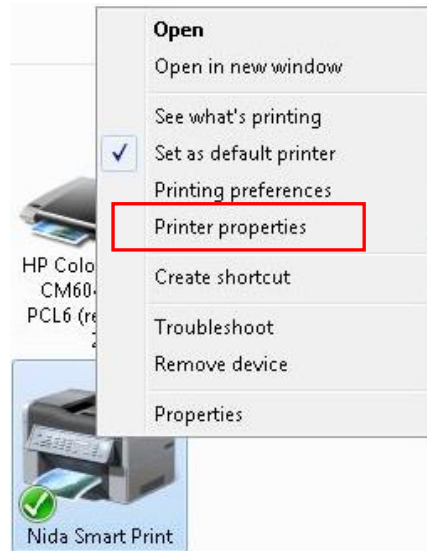


8. Click Finish to exit



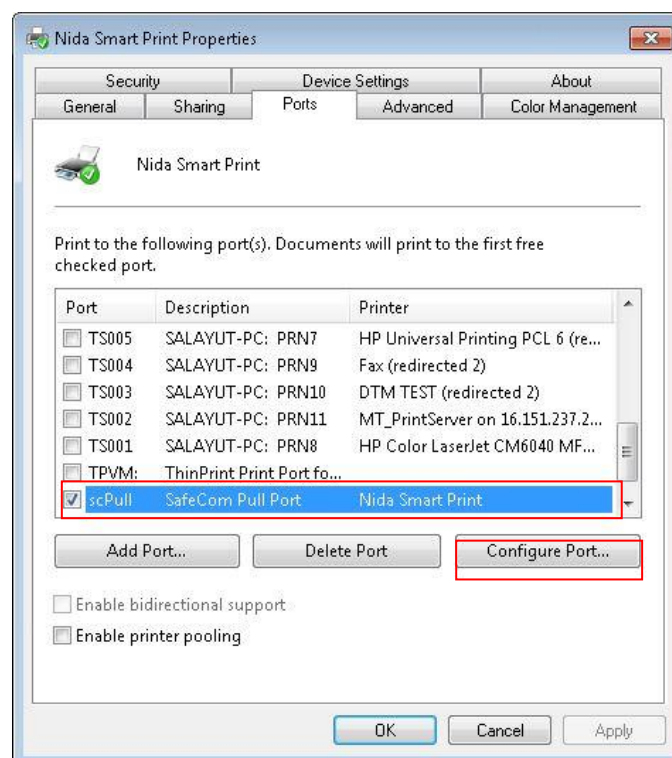
## Configuration Port

1. Right click at Nida Smart Print icon

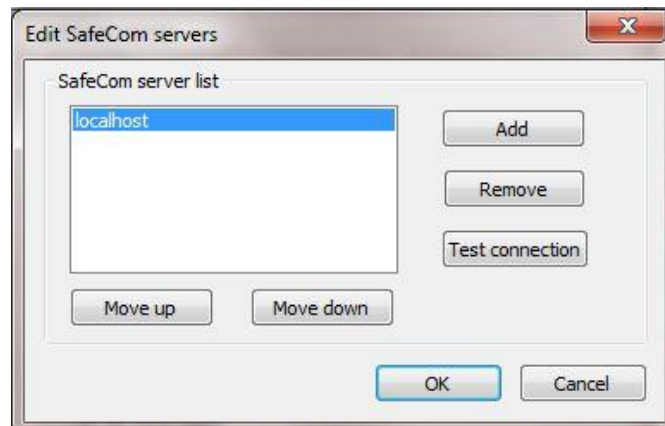


## Select Printer portie

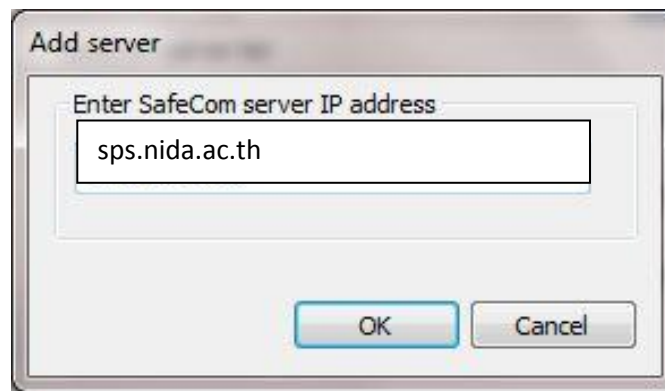
2. Go to Ports tab and select "scPull" port , Then click "Configure Port...".



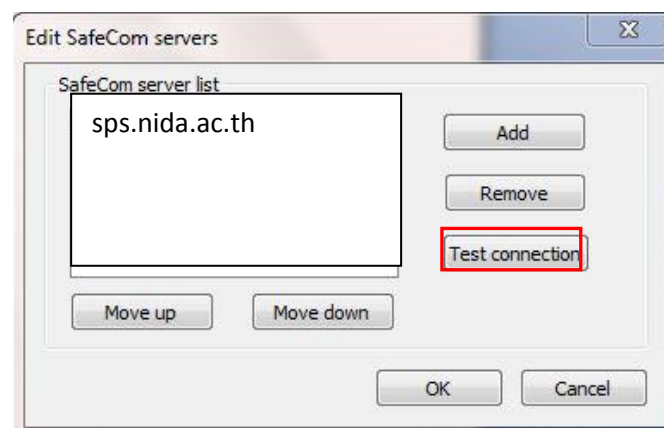
3. On Edit SafeCom server screen, Select localhost and click Remove, Then click Add to add new Server .

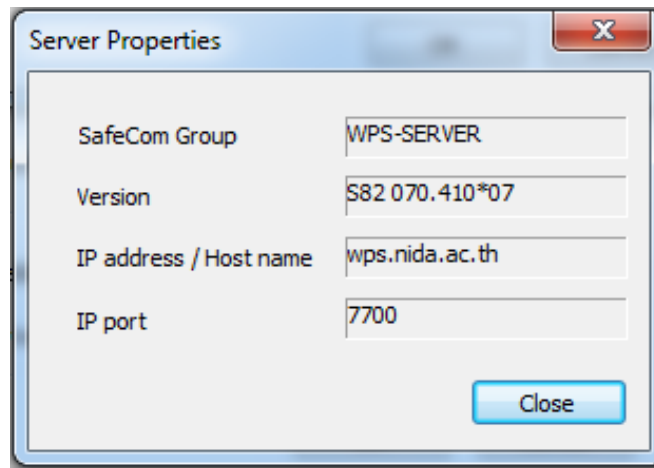


3.1 Enter server IP address is "sps.nida.ac.th", Then click OK.

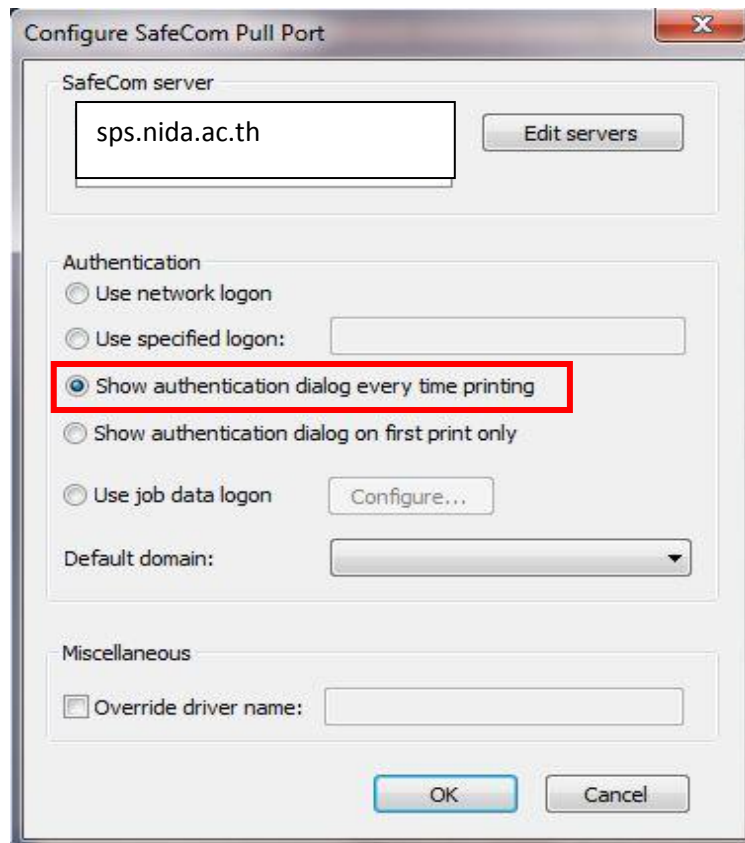


3.2 On Edit SafeCom server screen, Select "sps.nida.ac.th", Then click Test Connection .





4. Select "Show authentication dialog every time printing", Then click OK.



5. Enter User logon : TECH, Password : TECH ,Then click OK to continue.

