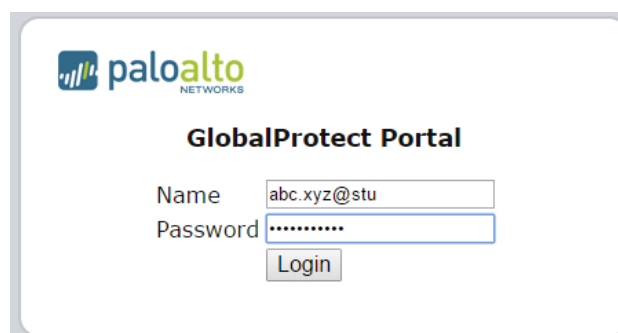


VPN Applications on Windows

To apply VPN via Windows operating system, **Agent** must be installed first. To set up **Agent**, follow these steps:

Step 1. Program Download

Start your browsers, such as Internet Explorer, Mozilla FireFox, or Google Chrome in order to download Agent from the URL: <https://vpnstu.nida.ac.th>.



The screenshot shows the Palo Alto Networks GlobalProtect Portal login interface. At the top left is the Palo Alto Networks logo. Below it, the text "GlobalProtect Portal" is centered. There are two input fields: "Name" with the value "abc.xyz@stu" and "Password" with masked characters. A "Login" button is positioned below the password field.

After your successful login, go into the **Download Global Protect Agent** screen. Click **Download** according to your operating systems, e.g. 32-bit and 64-bit versions of Windows or Mac OS. Click **Download**. After the download is successfully completed, you will gain the file named GlobalProtect.



The screenshot shows the Palo Alto Networks GlobalProtect Portal download options page. At the top left is the Palo Alto Networks logo. Below it, the text "GlobalProtect Portal" is centered. There are three blue hyperlinks for downloading the agent: "Download Windows 32 bit GlobalProtect agent", "Download Windows 64 bit GlobalProtect agent", and "Download Mac 32/64 bit GlobalProtect agent". Below these links, there is a block of text providing instructions for each operating system: "Windows 32 bit OS needs to download and install Windows 32 bit GlobalProtect agent.", "Windows 64 bit OS needs to download and install Windows 64 bit GlobalProtect agent.", and "Mac OS needs to download and install Mac 32/64 bit GlobalProtect agent."

Figure 1. Download Global Protect Agent

Step 2. Windows Edition

Monitor your computer whether it is Windows 64-bit or 32-bit. Go to **Control Panel**, and then double-click **System**.

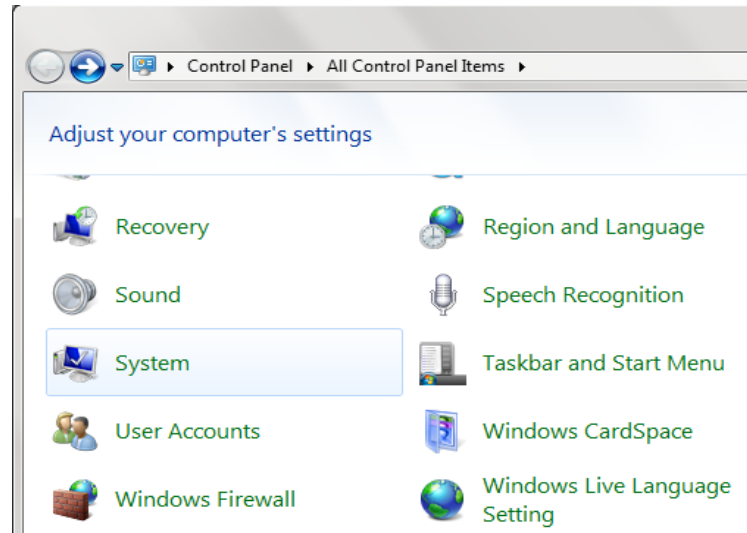


Figure 2. Control Panel

After **System** is double-clicked, a window will appear as shown below. The edition of Windows will be displayed on the screen.

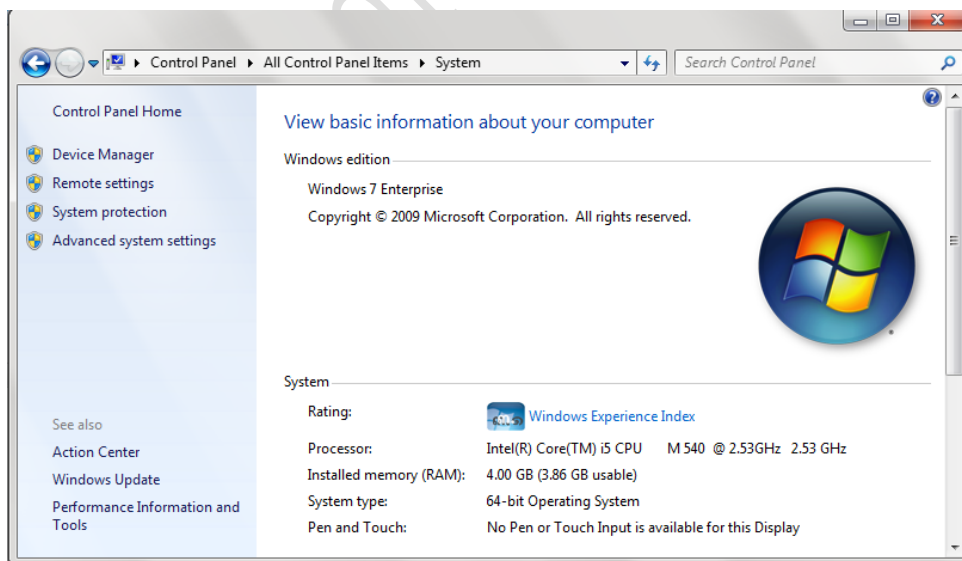


Figure 3. System

Step 3. Program Set-up

After you double-click the file named ...ers\sermsak\Downloads\GB\GlobalProtect64.msi, a new window will emerge as shown in Figure 4. Click **Run**.

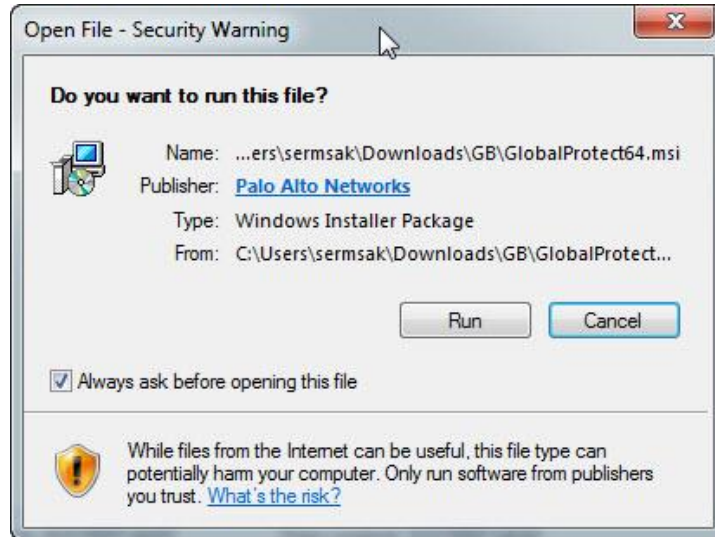


Figure 4. Security Warning Dialog

When the **Welcome to the GlobalProtect Setup Wizard** screen appears, click **Next** to continue.



Figure 5. Welcome to the GlobalProtect Setup Wizard

On this screen, you have to select a folder to save the file. Click **Next** to continue.

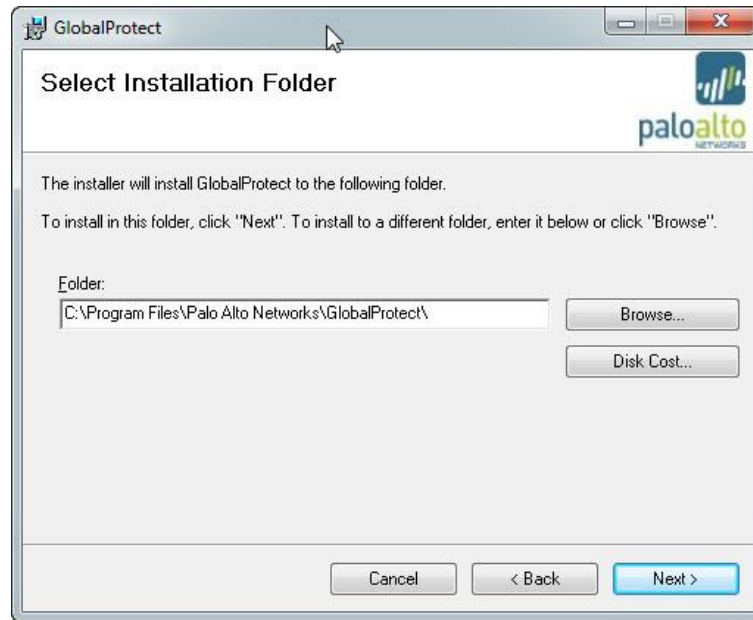


Figure 6. Select Installation Folder

Click Next to confirm the installation.

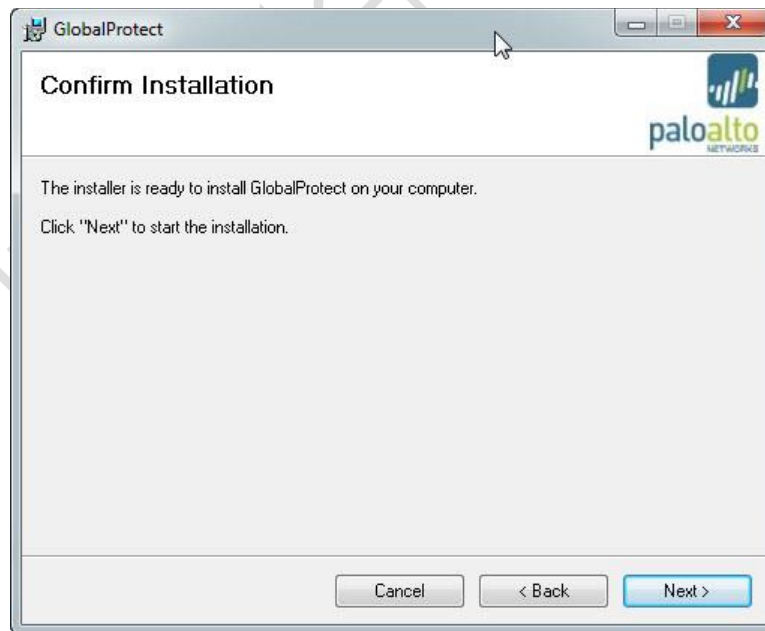


Figure 7. Confirm Installation

Wait until the set-up is completed.

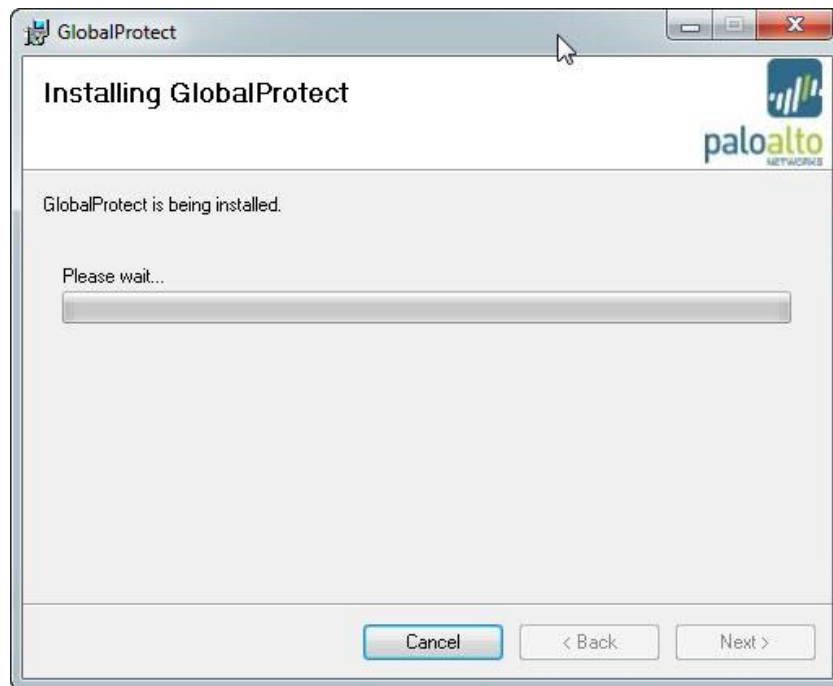


Figure 8. Installing Program

After the program is completely installed, click **Close**.

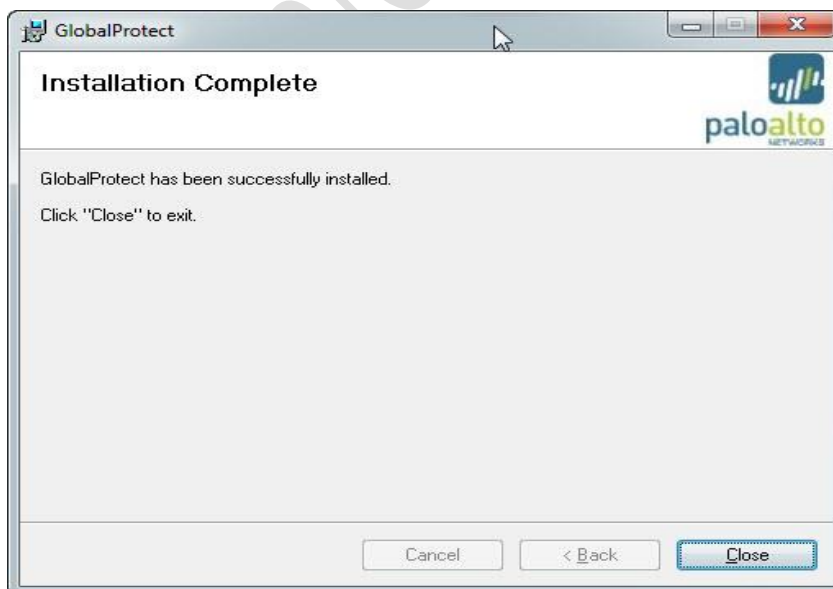


Figure 9. Complete

Upon the successful installation, the Settings screen will be automatically popped up.

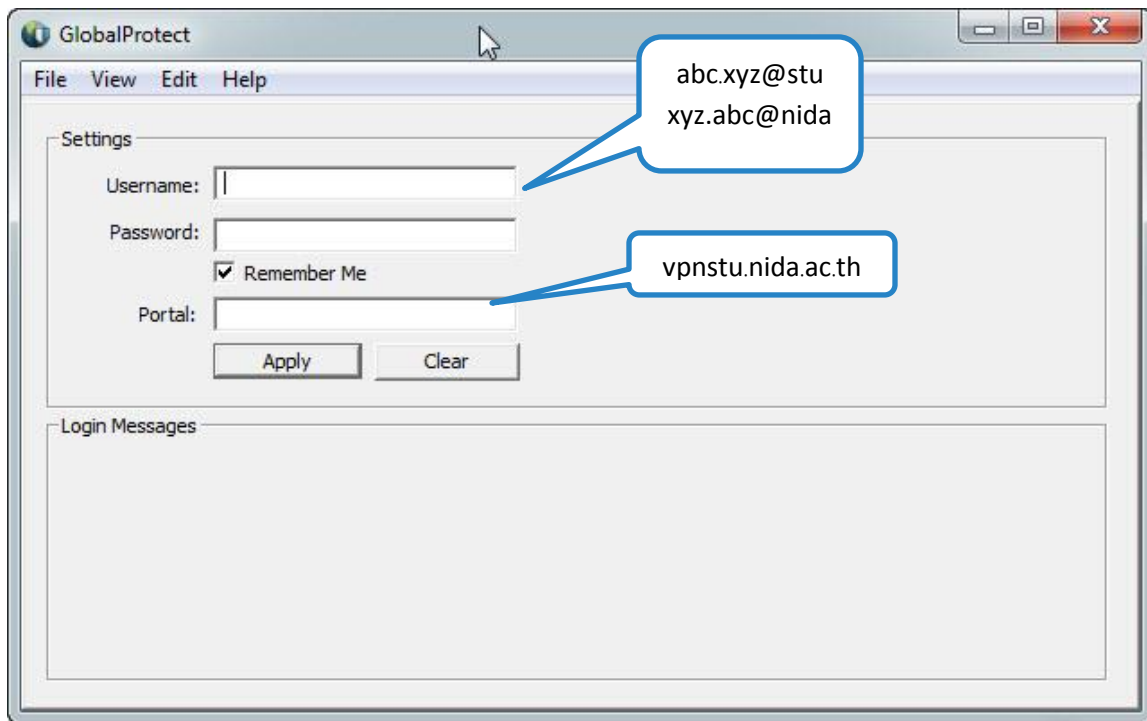


Figure 10. GlobalProtect Setup

Step 4. Settings before Operation

Username และ Password

Students use their username@stu, followed by a password.

Ex. Username: [abc.xyz@stu](#)

Password: 12345678

Lecturers and personnel use their username@nida.

Ex. Username: [xyz.abc@nida](#)

Password: 12345678

Portal

Students type **vpnstu.nida.ac.th** in the **Portal** box.

After that, click **Apply**. After the connection is completed, the **Connected** status will pop up as shown in Figure 9.

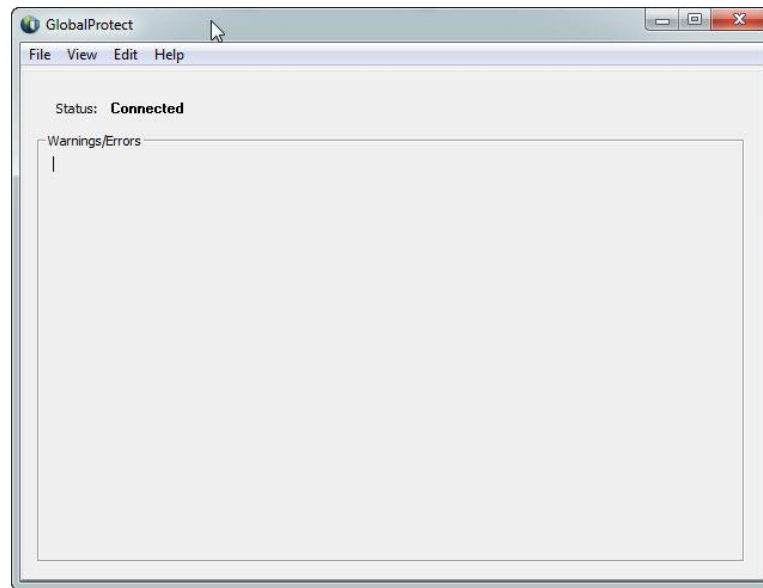



Figure 11. Complete Login

The set-up will be performed only one time after the program installation. For the next access, you can automatically connect up. (To save your username and password on the device, you may need to select **Remember me** as the option.)

Step 5. Connection and Disconnection

To connect the system, point to the  icon in the taskbar tray in the bottom right-hand corner of the screen. Right-click and choose **Connect**.

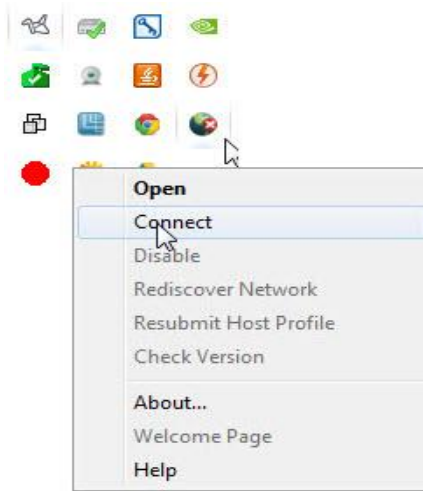


Figure 12. Connect vpn

To disconnect from the system, point to the Windows tray as shown in Figure 13. Right-click and choose **Disconnect**.

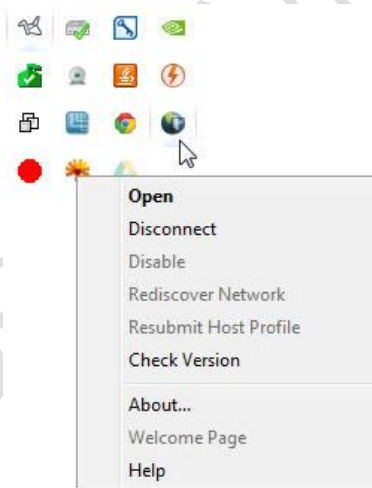


Figure 13. Disconnect vpn