
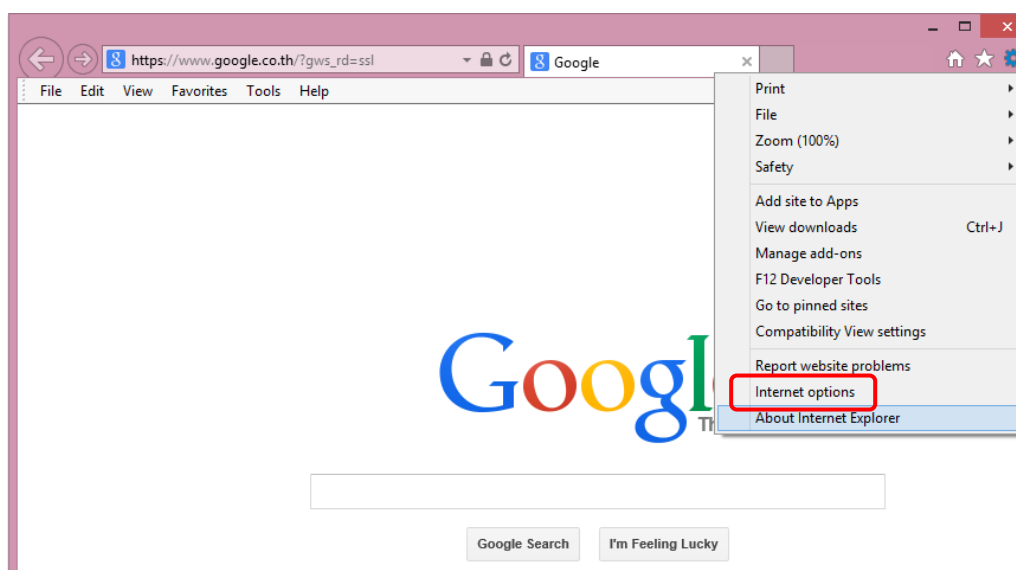


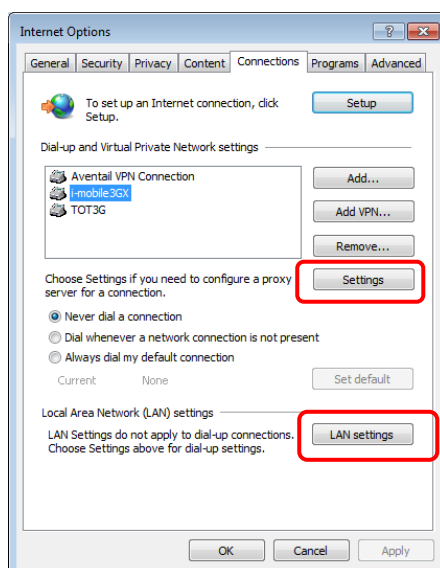
Internet Explorer



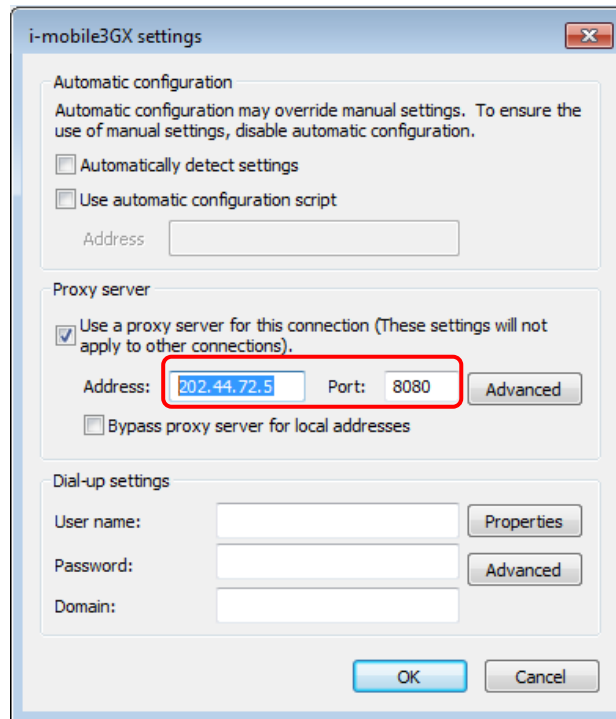
1. Open the Internet Explorer, go to the Tools menu,  and then choose Internet options as shown below.



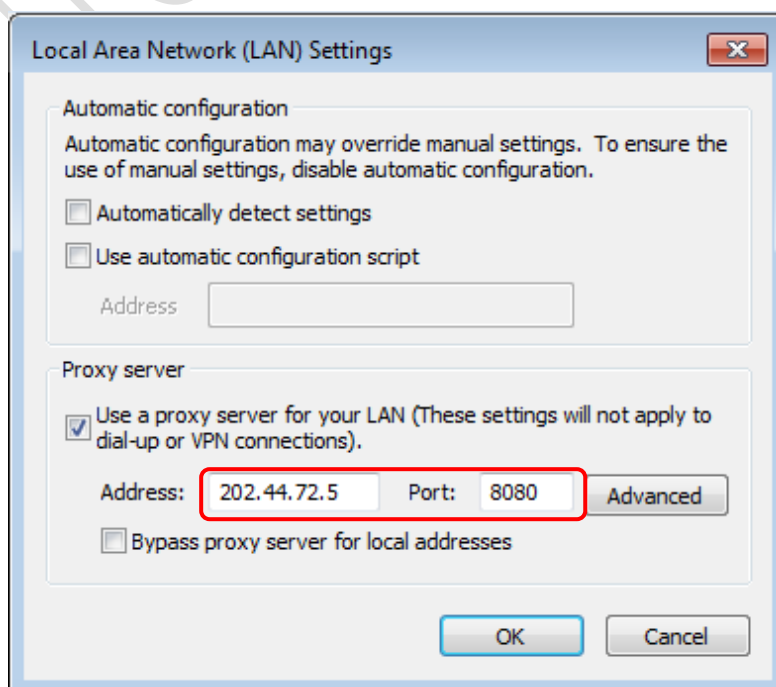
2. From Step 1, the Internet Options window will pop up. For specific equipment such as Air card, Dial, etc., select the network connection equipment provided in the Dial-up and Virtual Private Network Settings box first. After that, click Settings.



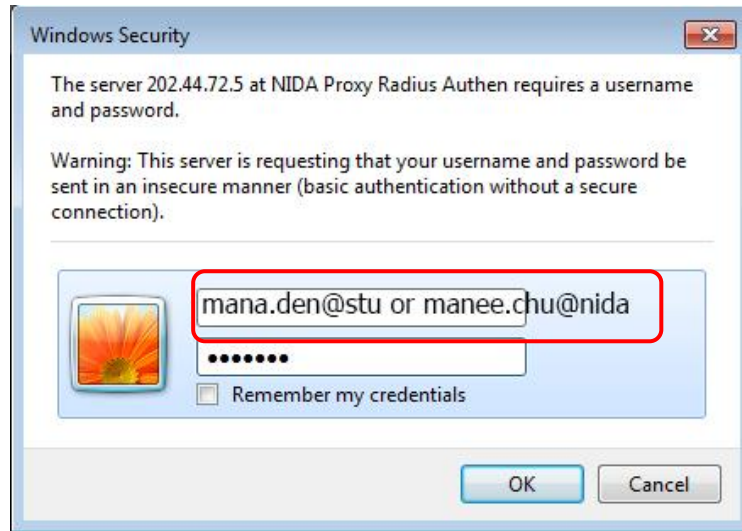
3. In the popping-up **Settings** window, insert the proxy server address by checking **Use a proxy server for this connection** (These settings will not apply to other connections). Type 202.44.72.5 in the **Address** box, and 8080 in the **Port** box.



4. From Step 2, in the case of LAN or Wi-Fi network connection, check **Use a proxy server for your LAN** (These settings will not apply to dial-up or VPN connections). Type 202.44.72.5 in the **Address** box, and 8080 in the **Port** box as shown in the figure. Click **OK**.



5. When you open the website, the **Windows Security** page will be opened. Fill in your **NetID** and **Password** for authentication as shown below.

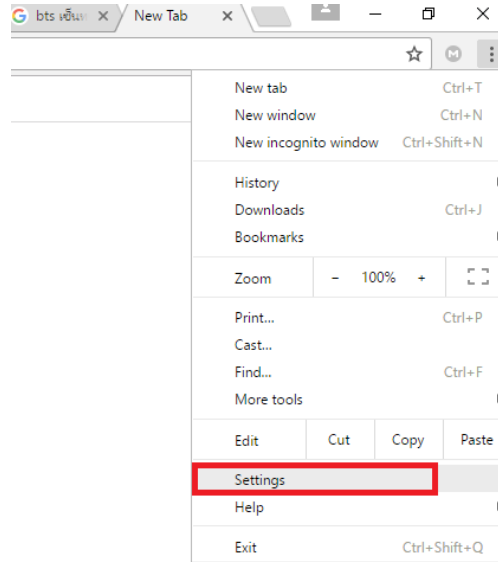


ITCenter NIDA

Google Chrome

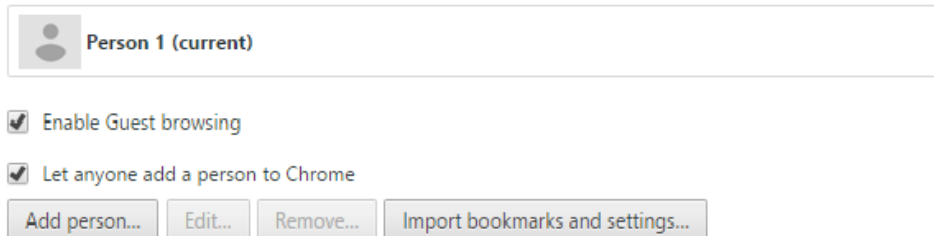


1. Launch the Google Chrome browser. Go to the Options menu and click Settings.

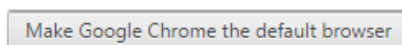


2. After the Settings window appears from Step 1, select Show advanced settings down the page.

People



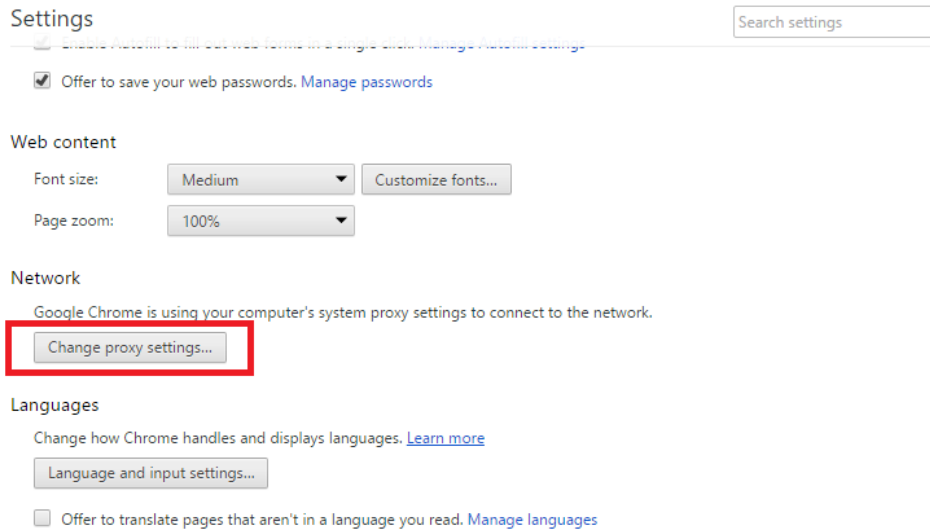
Default browser



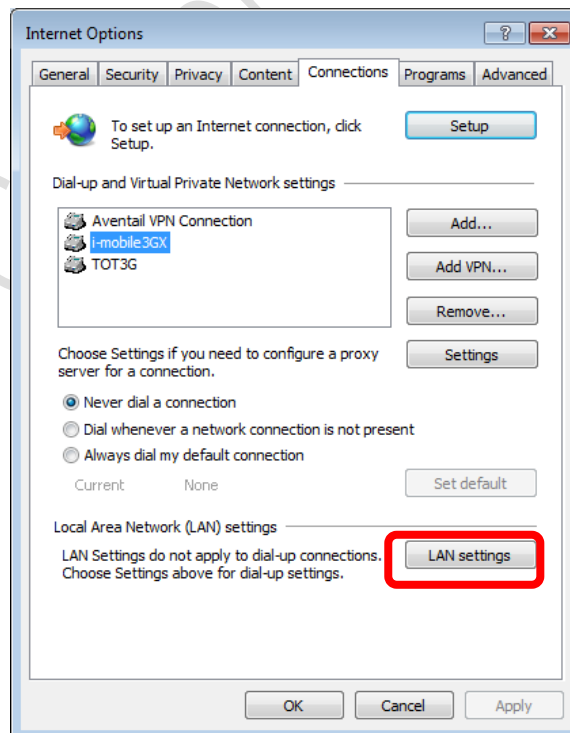
Google Chrome is not currently your default browser.

[Show advanced settings...](#)

3. The **Settings** window will be enlarged and additional network settings will be displayed. Click **Change proxy settings**.



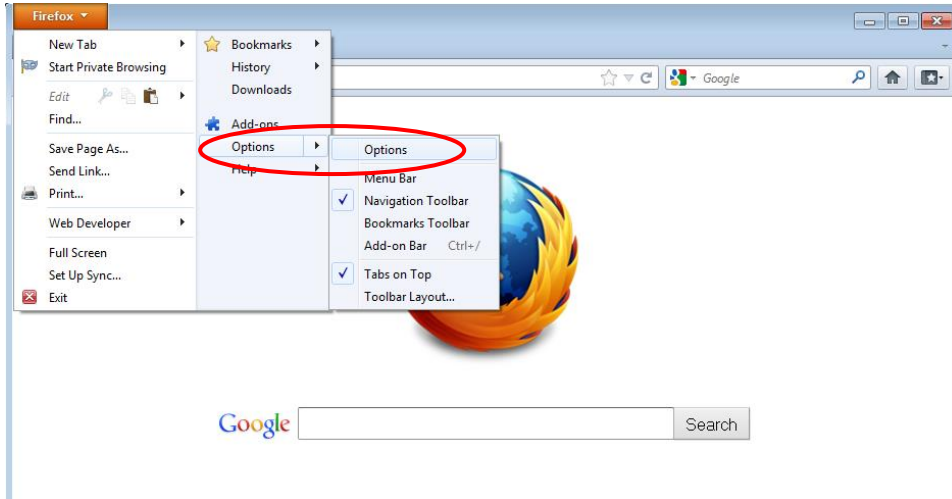
4. Further to Step 3, the **Internet Options** window like that in the **Internet Explorer** (Step 2 on page 1) will then pop up. Fill in the **Proxy Server Address**.



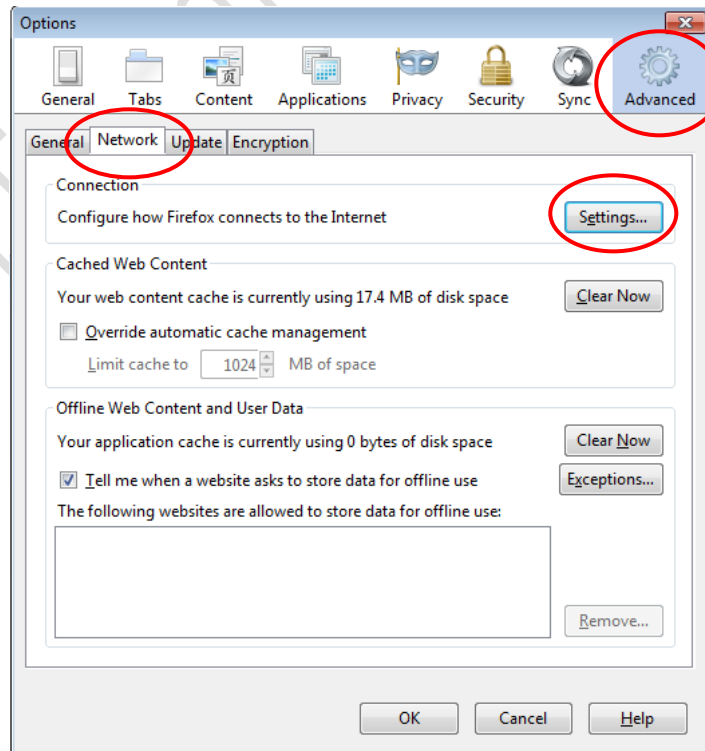
Mozilla Firefox



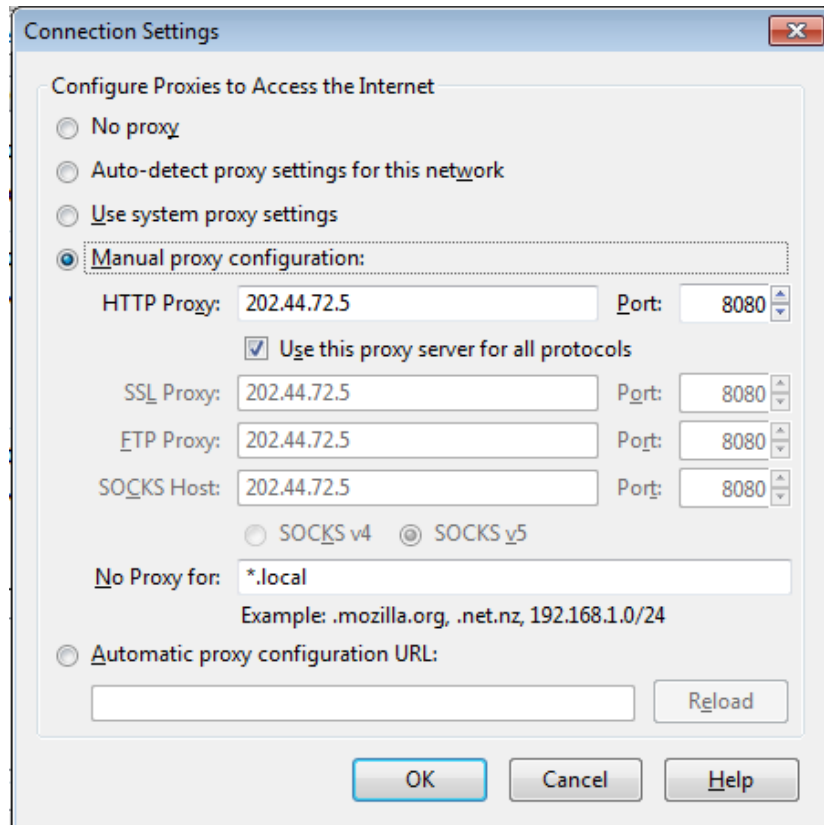
1. Open the Mozilla Firefox browser, go to Firefox menu in the top left-hand corner of the screen, and choose Options as shown below.



2. After Step 1, the Options window will be opened. Click **Advanced > Network > Settings...**

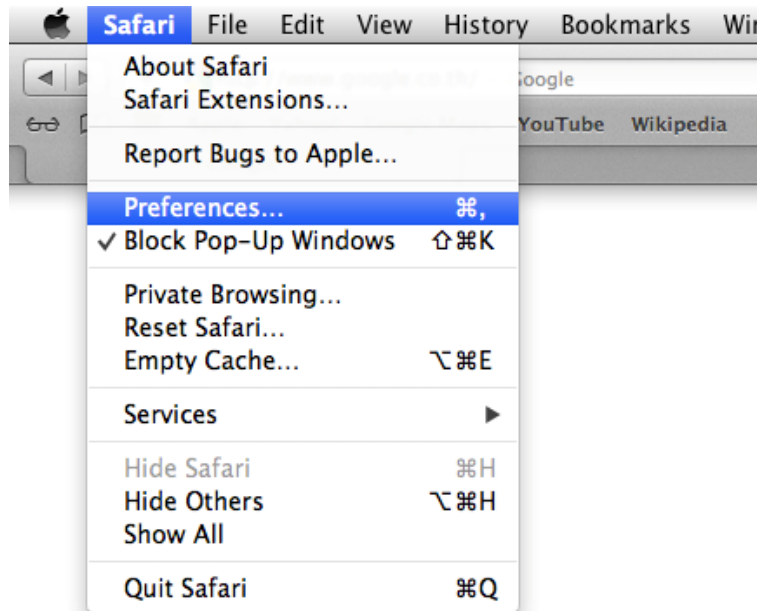


3. After Step 2, the **Connection Settings** window will appear. Check **Manual proxy** configuration. Enter **202.44.72.5** in the HTTP Proxy box, and **8080** in the Port box, and then click **OK**. Upon the website launch, there will be a dialog box popping up. Enter your **NetID** and **Password** for authentication.

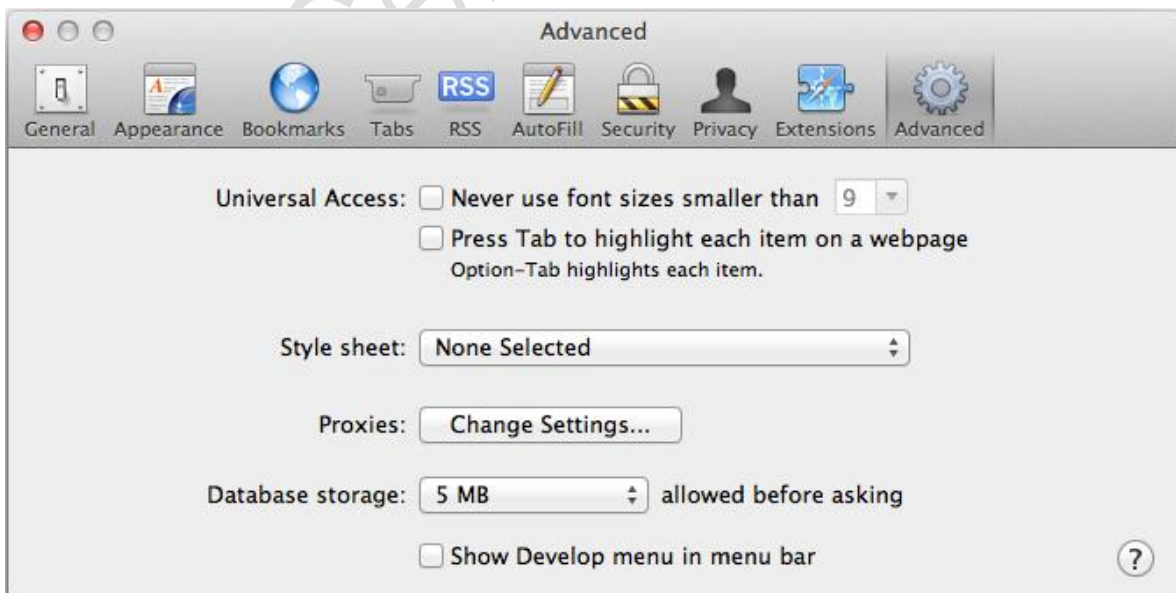




1. Click on the **Safari** browser, go to the **Safari** menu, and choose **Preferences...** as shown in the figure below.



2. After Step 1, the **Advanced** window will appear. For **Proxies...**, select **Change Settings**.



- Further to Step 2, in the **Network** window, check Web Proxy (HTTP). Enter 202.44.72.5 in the **Web Proxy Server** box and 8080 in the **Port** box. After that, click **OK**. To access a website, insert your **NetID** and **Password** for authentication.

