

### 3. ขั้นตอนการ Add Printer

After Install Software Client and Safecom Application Print , You must add new Printer.

#### For Windows XP

Consists of 2 steps.

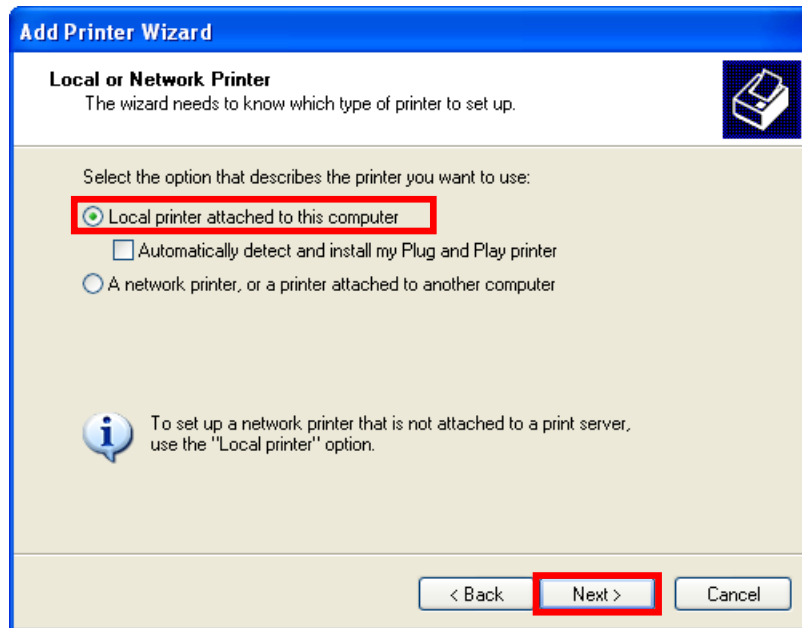
1. Create Driver
2. Configuration Port

#### Create Driver

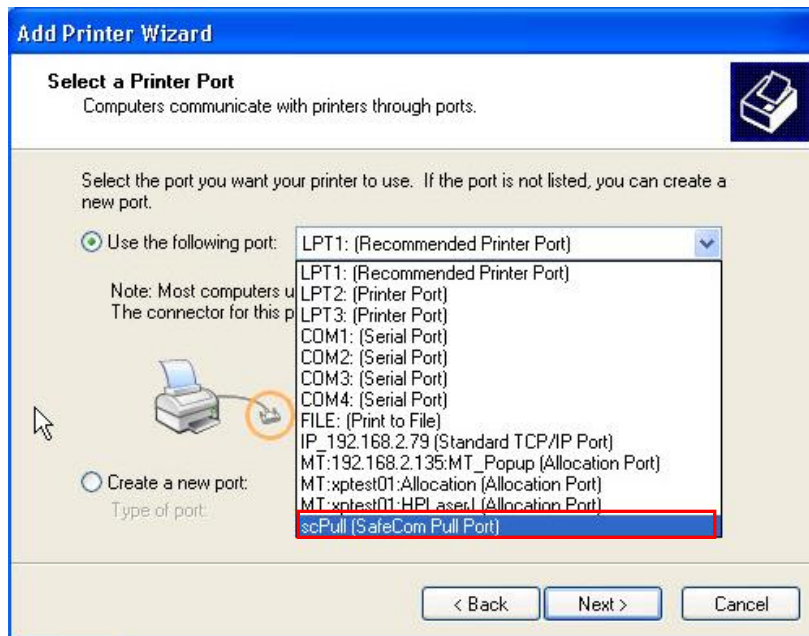
- 1) Start > Control Panel > Devices and Printers > Add Printer



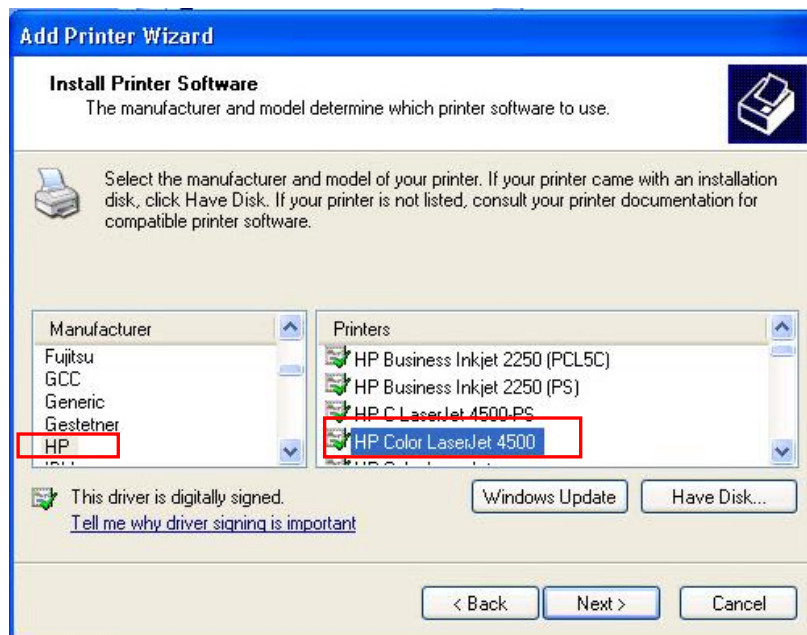
- 2) Select “Local printer attached to this computer”, Then click Next



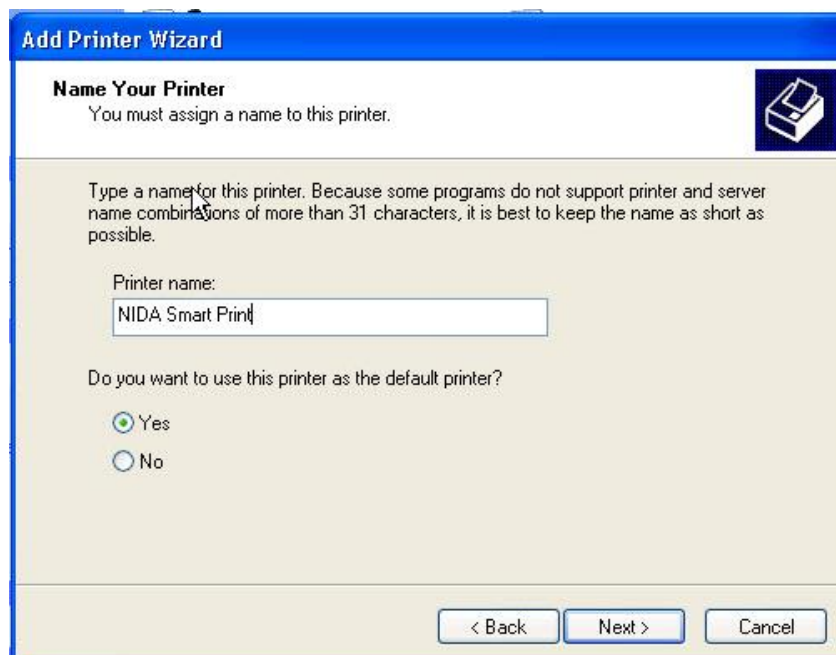
- 3) Select “Use the following port” and select “scPull (SafeCom Pull Port)”, Then click Next to continue.



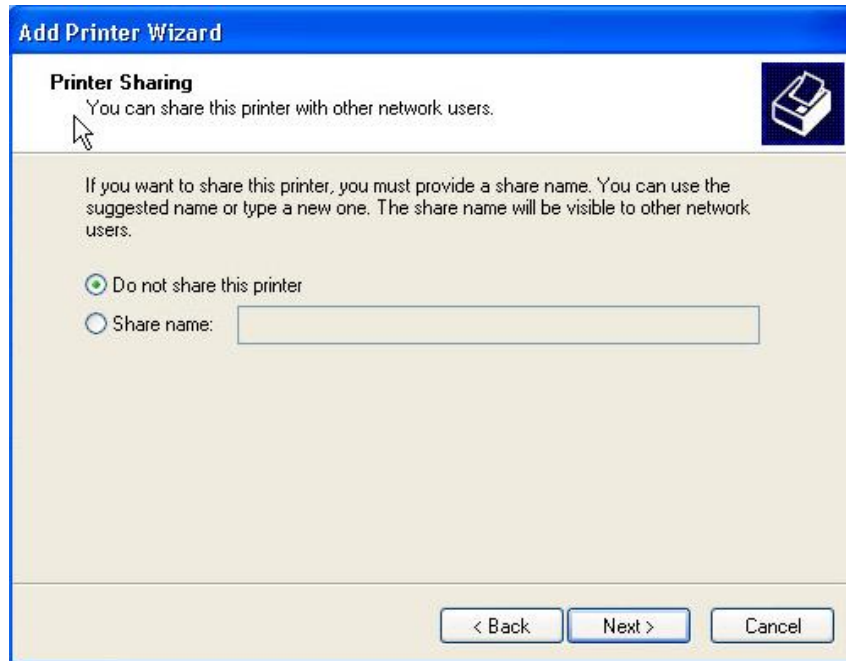
- 4) Select Manufacturer : HP and select Printers : "HP Color LaserJet 4500", Then click Next.



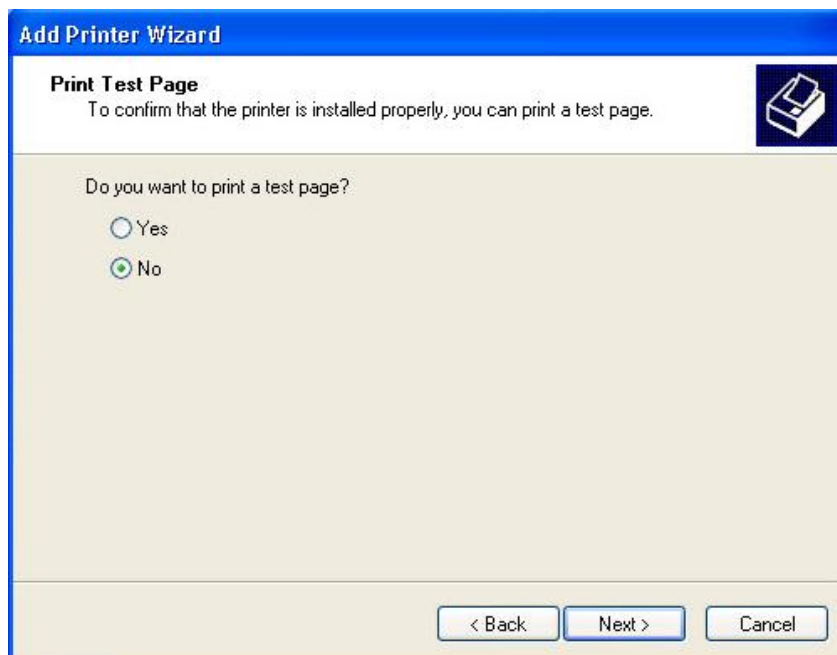
- 5) Enter Printer name : " NIDA Smart Print" , Then click Next



- 6) Select “Do not share this printer”, Then click Next.



- 7) Select “No” and click Next



- 8) Click Finish to exit.



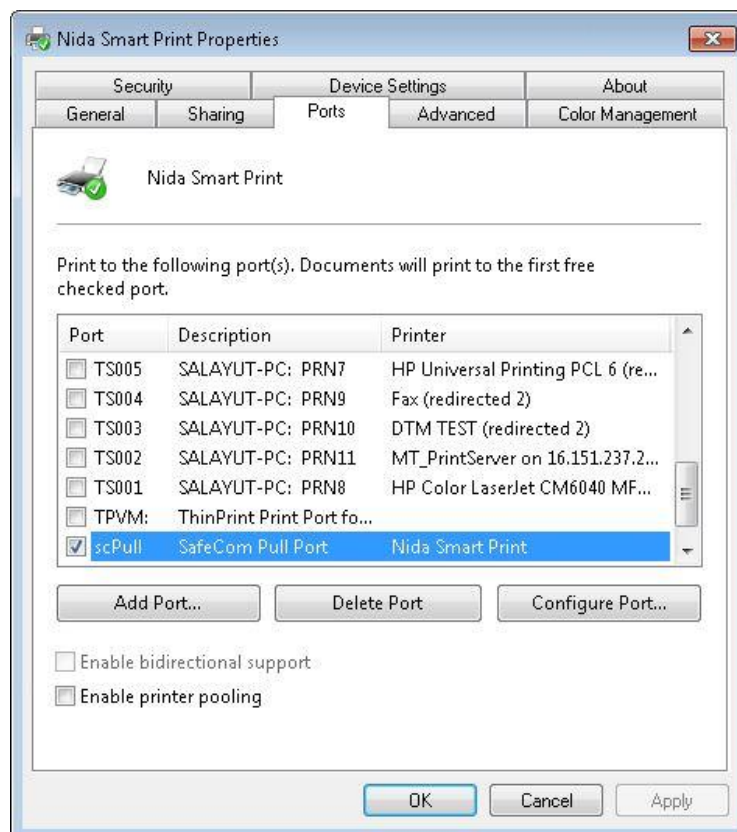
## Configuration Port

1. Right click at “Nida Smart Print” icon

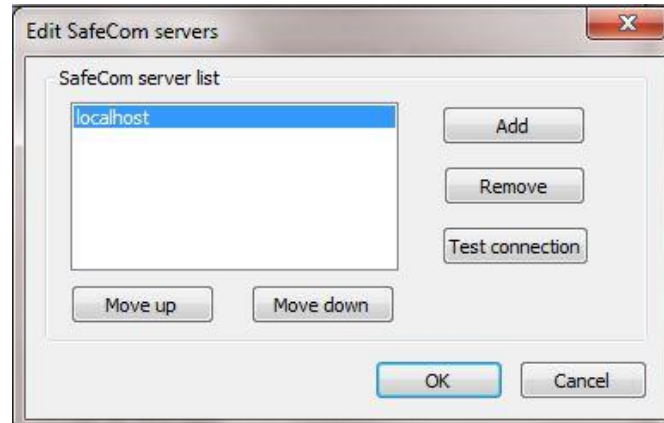


## Select Properties ใน Windows XP

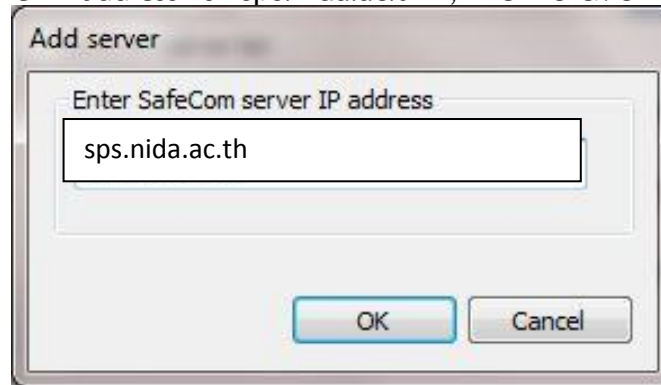
2. Go to Ports tab , Select “scPull” port and click “Configure Port...”



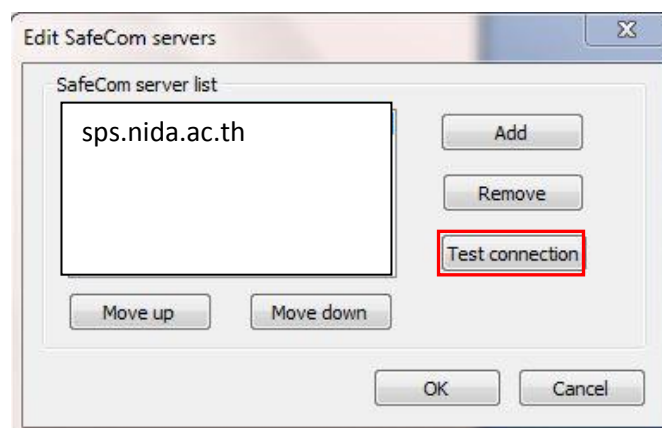
3. On Edit SafeCom server screen, Select localhost and click Remove, Then click Add to add new Server .



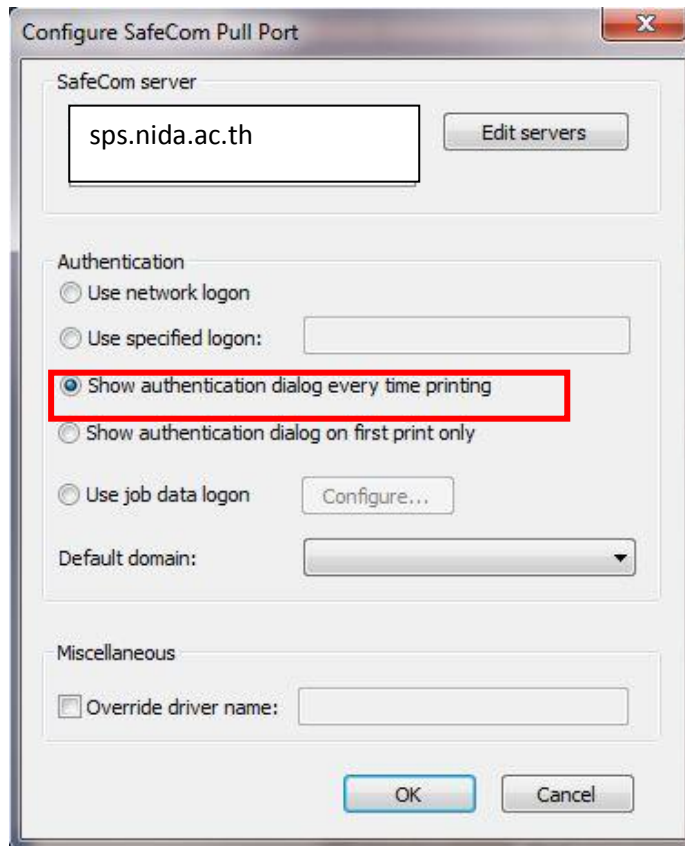
3.1 Enter server IP address is "sps.nida.ac.th", Then click OK.



3.2 On Edit SafeCom server screen, Select "sps.nida.ac.th", Then click Test Connection .



4. Select “Show authentication dialog every time printing”, Then click OK.



5. Enter User logon : TECH, Password : TECH ,Then click OK to continue.

