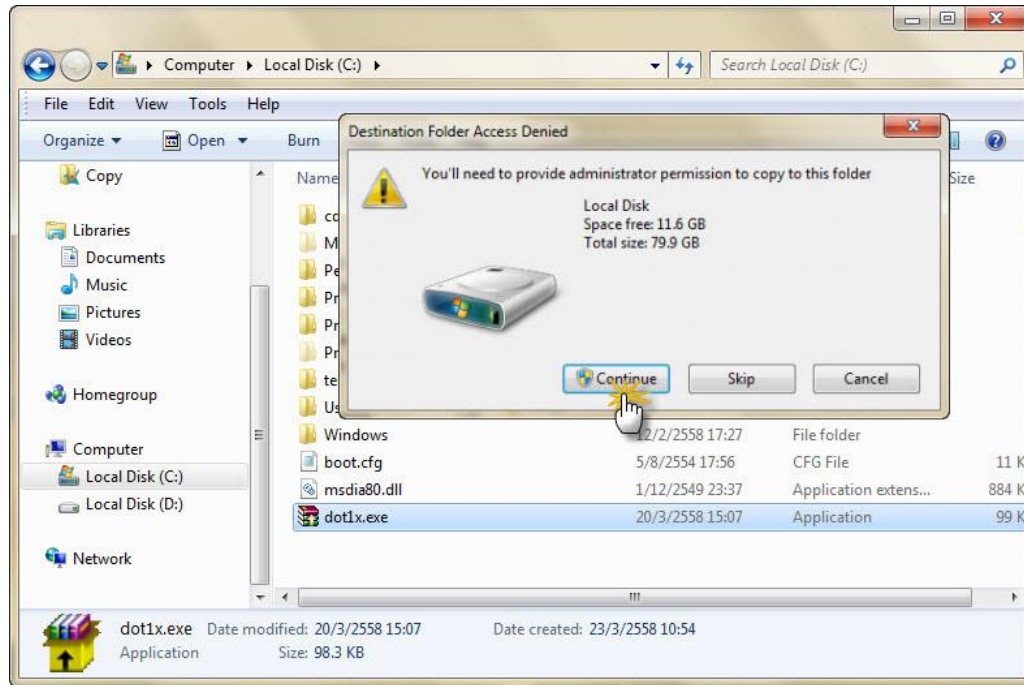
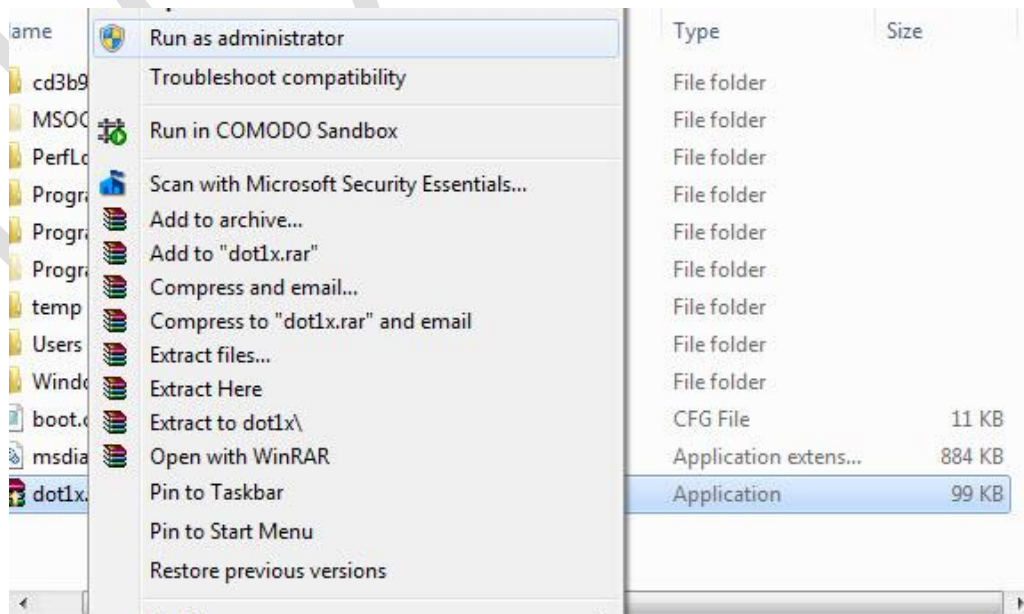


## User's Guide for NIDA\_Staff / NIDA\_Staff by True / NIDA\_Staff by AIS on Windows

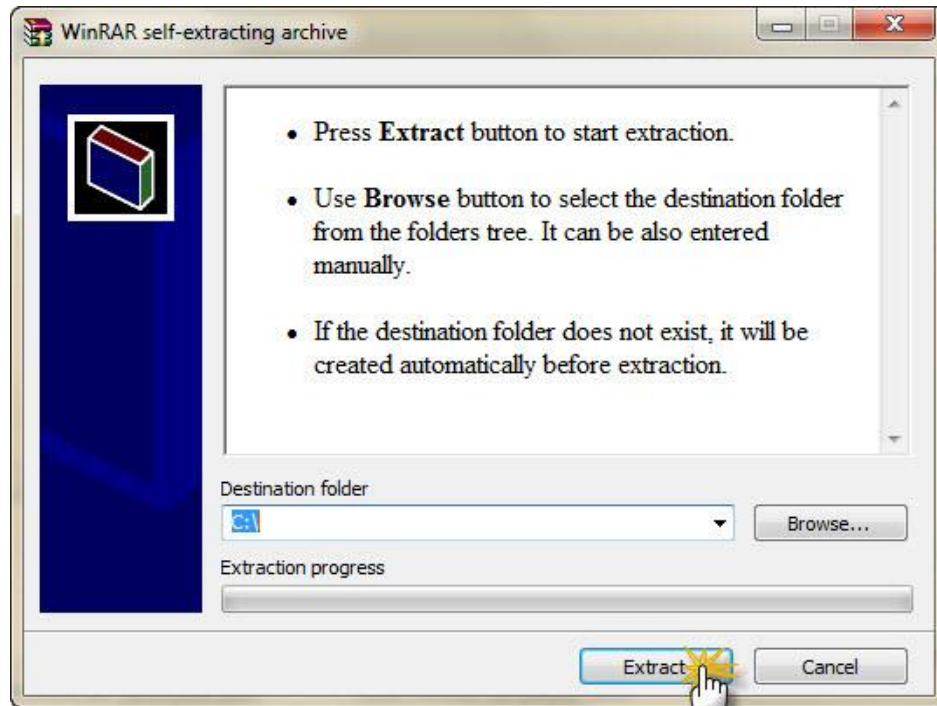
1. Go to <http://itc.nida.ac.th/wifi/dot1x.exe>, download the file, and save it in the C Drive of your device.



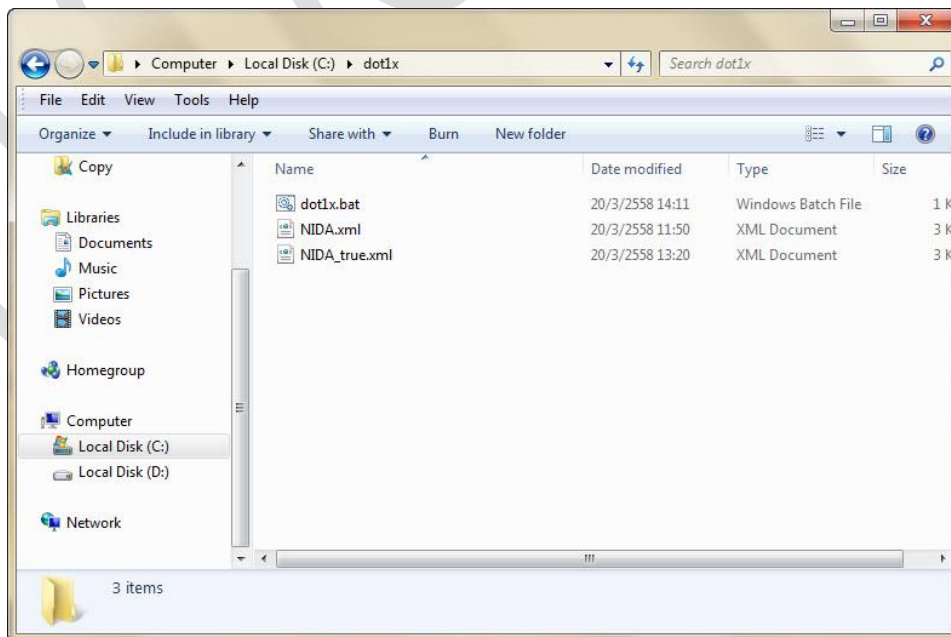
2. Point to **dot1x.exe**. Right-click to select **Run as administrator**.

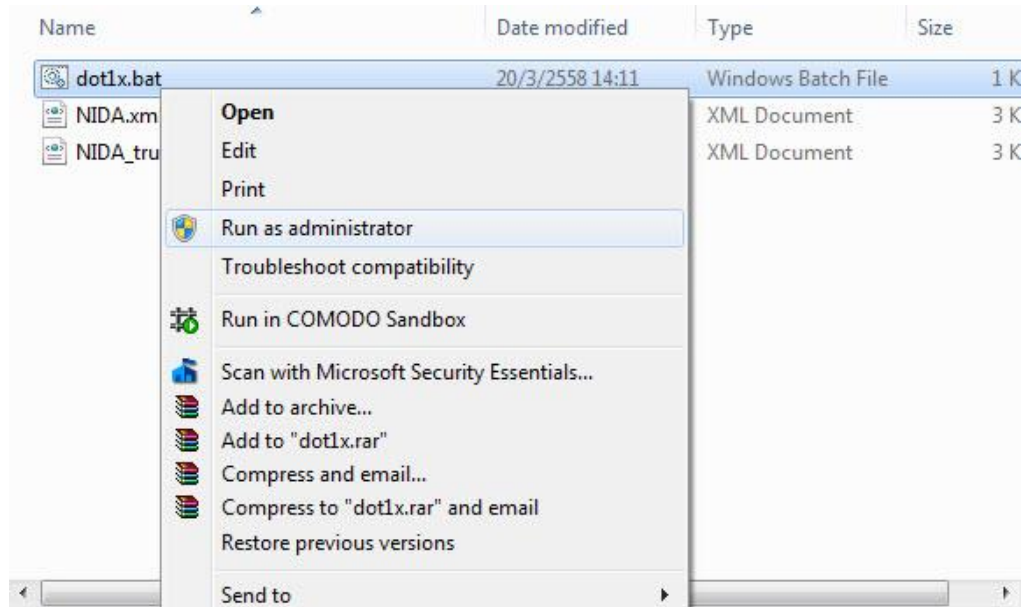


When the **User Account Control** window pops up, click **Yes**. When the **WinRAR self-extracting archive** screen appears, click **Extract**. Upon successful file extraction, the **dot1x** folder will be gained.



3. Go into the **dot1x** folder and point to the **dot1x.bat** file. Right-click and select **Run as administrator**.





When the **User Account Control** screen shows, click **Yes**. After **Add Finish** appears, press any button on the keyboard to complete this process.



4. For wireless connection, go to **Wireless Network Connection** and click **NIDA\_Staff** , **NIDA\_Staff by True**, or **NIDA Staff by AIS**. Click **Connect**.



5. To operate the network, type your username and password for authentication and click **OK**.

